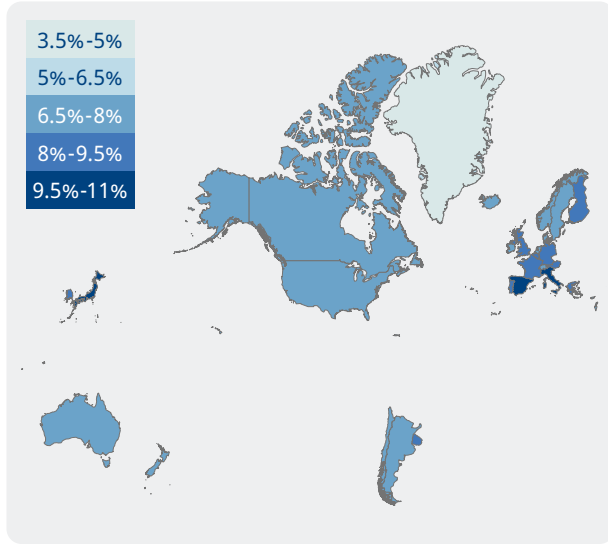


Prevalence of vision loss

Population: **1,085 million**



Vision loss by age



Children and adolescents (0-19)

6.5 million

Image: SNEC



Adults (20-49)

11.9 million

Image: UN vision screening



Older adults (50 and over)

55.4 million

Image: Michael Amendolia, The Fred Hollows Foundation

Categories of vision loss

3.0M

1.7M Female

1.3M Male

Blindness

31.1M

17.4M Female

13.6M Male

Moderate to severe

27.6M

15.9M FEMALE

11.7M MALE

MILD

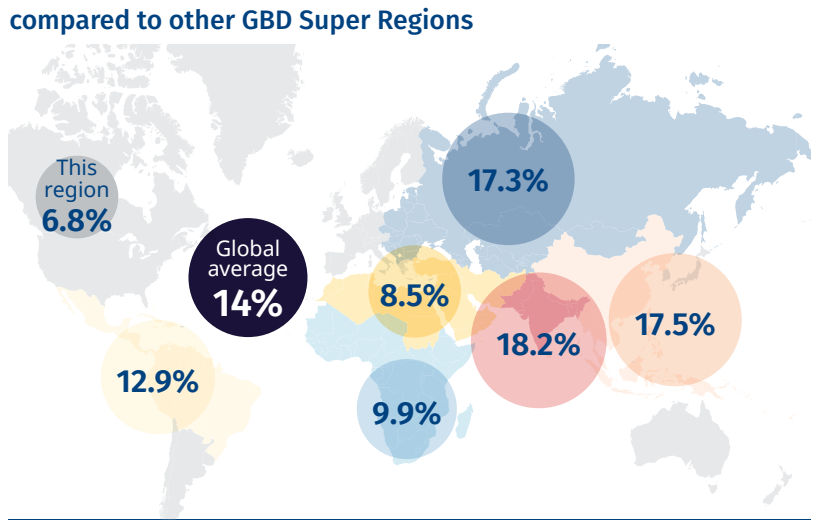
12.2M

6.8M FEMALE

5.4M MALE

NEAR

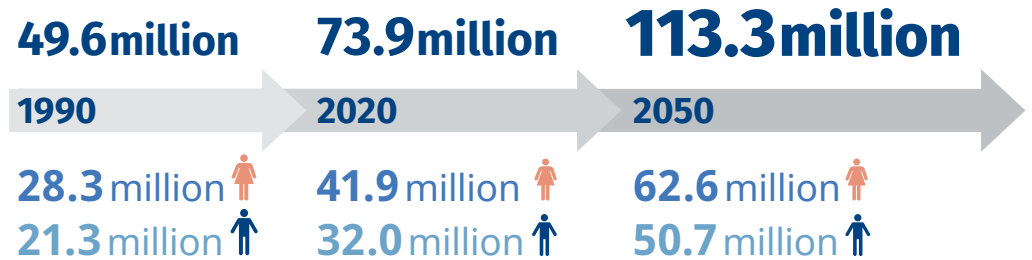
Prevalence of vision loss compared to other GBD Super Regions



Top five causes of blindness and moderate to severe vision loss

	Uncorrected refractive error	17.2M
	Cataract	8.7M
	Glaucoma	1.4M
	Age-related macular degeneration	1.3M
	Diabetic retinopathy	0.6M

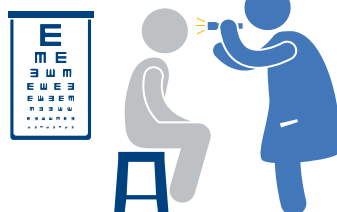
The number of people with vision loss is growing



Eye care service indicators

Countries: **36**

Cataract surgeries
6,032,094 annually



National eye health

No. countries reporting:

Coordinators: **3**

Committees: **5**

Plans: **3**

Human resources

81,080 ophthalmologists

129,118 optometrists

64,537 allied ophthalmic personnel

Data

No. countries reporting:

Prevalence surveys: **20**

Service assessments: **2**

For further information and definitions visit <https://www.iapb.org/learn/vision-atlas>

Data from VLEG/GBD 2020 model, via the IAPB Vision Atlas