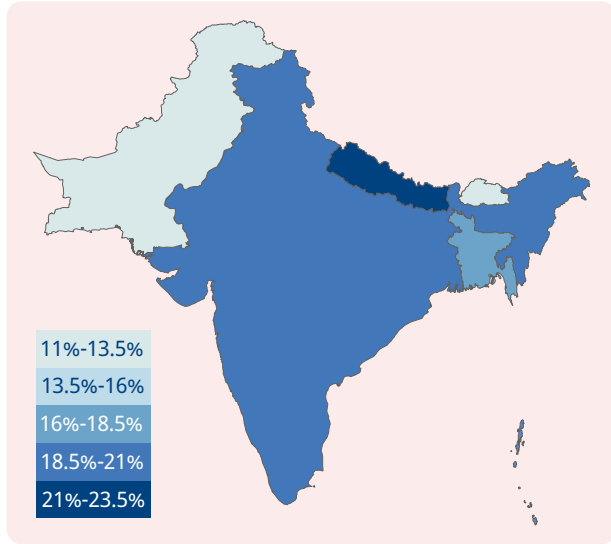


Prevalence of vision loss

Population: **1,795 million**



Vision loss by age



Children and adolescents (0-19)

22.5 million

Image: Gourav Kant Shrivastava



Adults (20-49)

78.0 million

Image: Dickson Charles

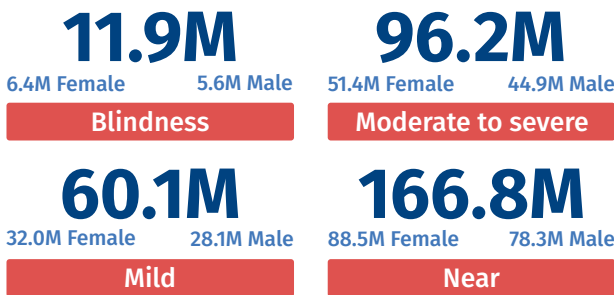


Older adults (50 and over)

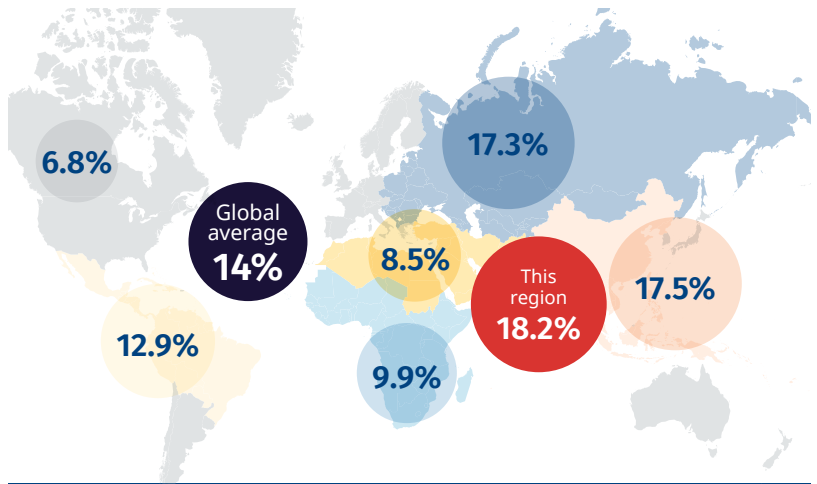
234.6 million

Image: Steele Burrow

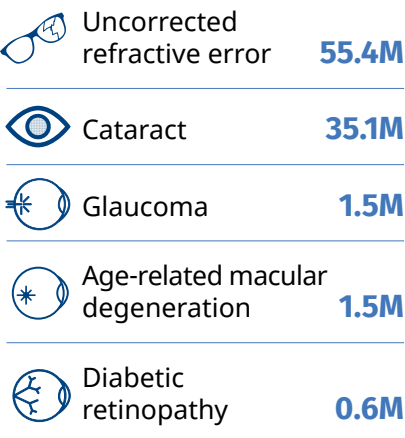
Categories of vision loss



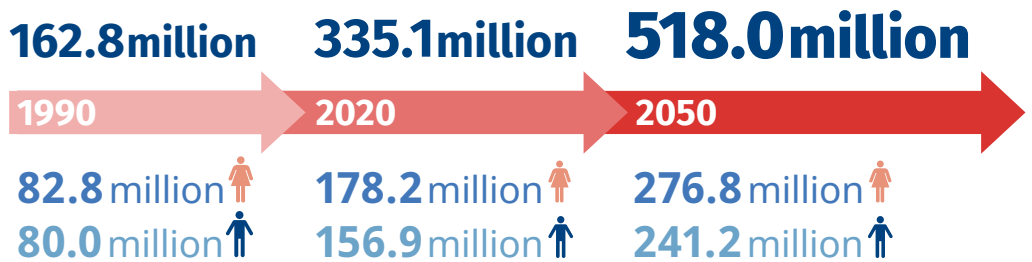
Prevalence of vision loss compared to other GBD Super Regions



Top five causes of blindness and moderate to severe vision loss



The number of people with vision loss is growing

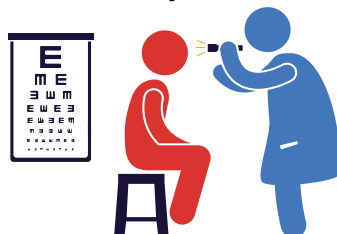


Eye care service indicators

Countries: **5**
Cataract surgeries
500,000 annually

National eye health
No. countries reporting:
Coordinators: **5**
Committees: **4**
Plans: **5**

Data
No. countries reporting:
Prevalence surveys: **5**
Service assessments: **4**



Human resources
26,248 ophthalmologists
11,038 optometrists
44,589 allied ophthalmic personnel

For further information and definitions visit <https://www.iapb.org/learn/vision-atlas>

Data from VLEG/GBD 2020 model, via the IAPB Vision Atlas