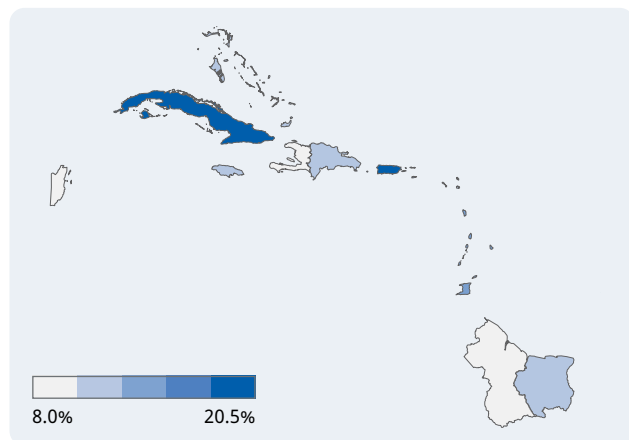
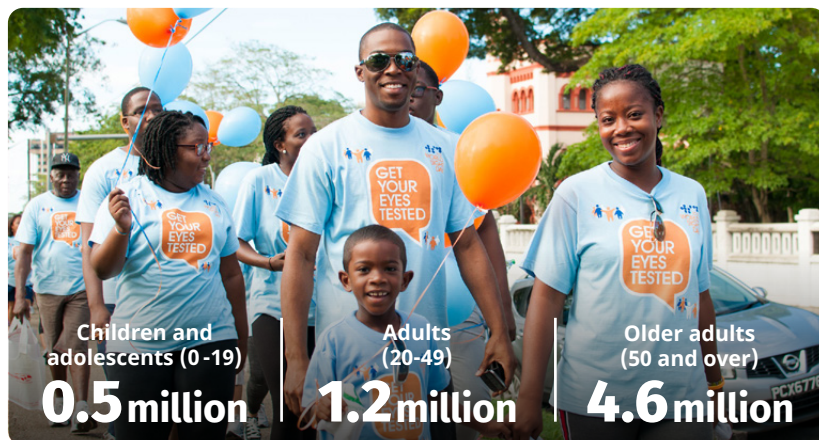


### Prevalence of vision loss

Population: **44 million** Countries: **19**



### Vision loss by age



Children and adolescents (0-19)  
**0.5 million**

Adults (20-49)  
**1.2 million**

Older adults (50 and over)  
**4.6 million**

Image: Trinidad and Tobago WSD event committee

### Categories of vision loss

**0.3** million people  
0.1M Female  
0.1M Male

**Blindness**

**1.6** million people  
0.9M Female  
0.7M Male

**Moderate to severe**

**1.7** million people  
0.9M Female  
0.8M Male

**Mild**

**2.7** million people  
1.3M Female  
1.4M Male

**Near**

### The number of people with vision loss is growing

**3.7 million**

**1990**

**1.9 million**  
 **1.8 million**

**6.2 million**

**2020**

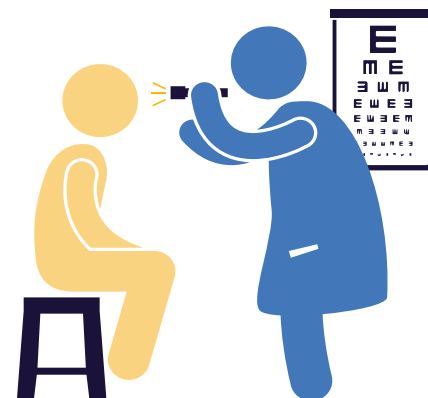
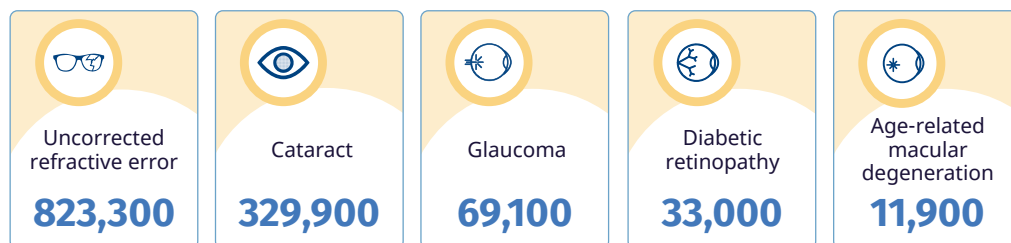
**3.2 million**  
 **3.0 million**

**8.9 million**

**2050**

**5.0 million**  
 **3.9 million**

### Top five causes of blindness and moderate to severe vision loss



### Eye care service indicators

#### Human resources

**2,744** ophthalmologists  
**532** optometrists  
**302** allied ophthalmic personnel

#### National eye health

*No. countries reporting:*  
Coordinators: **9**  
Committees: **4**  
Plans: **1**

#### Data

*No. countries reporting:*  
Prevalence surveys: **6**  
Service assessments: **2**

#### Cataract surgeries

**68,692** annually