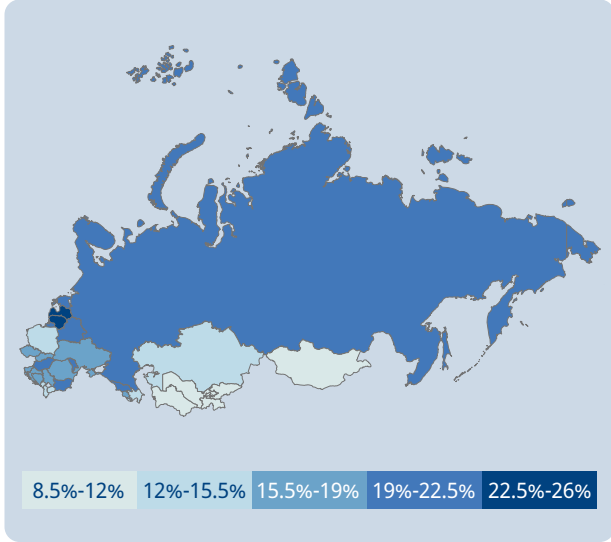


Prevalence of vision loss

Population: 417 million



Vision loss by age



Image: T Chuluunabt



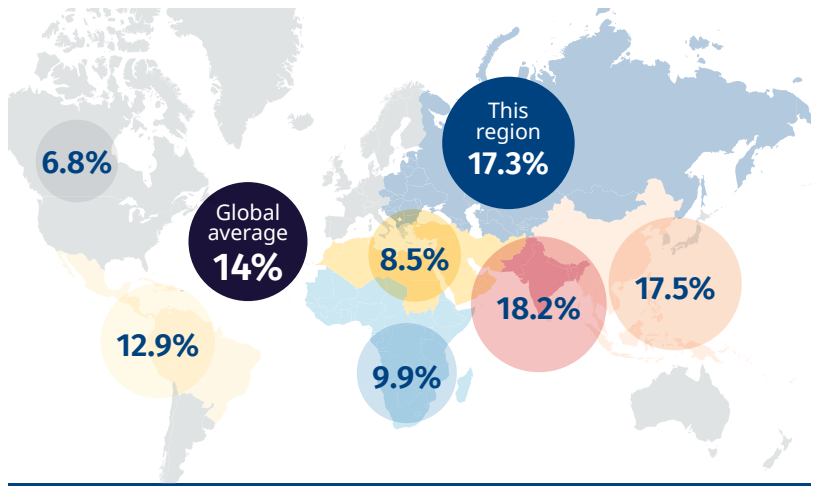
Image: Andreea Calin



Image: Elzat Mamutaliev

Prevalence of vision loss compared to other GBD Super Regions

compared to other GBD Super Regions



Categories of vision loss

1.4M

0.9M Female 0.6M Male

Blindness

18.0M

11.4M Female 6.6M Male

Moderate to severe

9.5M

5.7M Female 3.9M Male

Mild

43.2M

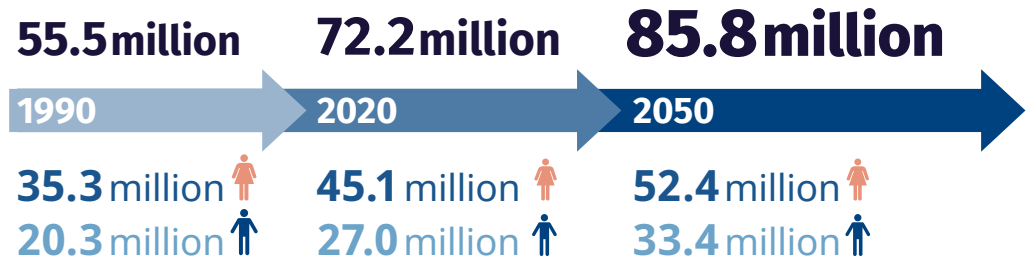
27.2M Female 16.1M Male

Near

Top five causes of blindness and moderate to severe vision loss

	Uncorrected refractive error	9.7M
	Cataract	3.5M
	Glaucoma	0.4M
	Age-related macular degeneration	0.3M
	Diabetic retinopathy	0.2M

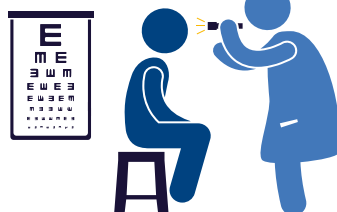
The number of people with vision loss is growing



Eye care service indicators

Countries: 29

Cataract surgeries
818,655 annually



National eye health

No. countries reporting:

Coordinators: 2

Committees: 2

Plans: 1

Human resources

33,805 ophthalmologists

5,465 optometrists

1,960 allied ophthalmic personnel

Data

No. countries reporting:

Prevalence surveys: 9

Service assessments: 0

For further information and definitions visit <https://www.iapb.org/learn/vision-atlas>

Data from VLEG/GBD 2020 model, via the IAPB Vision Atlas