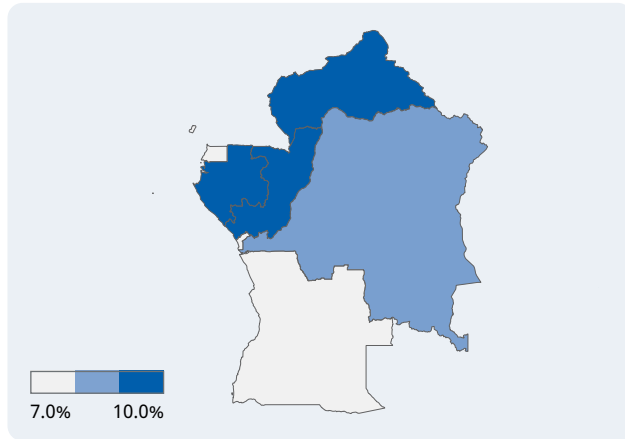


Prevalence of vision loss

Population: **136 million** Countries: **6**



Vision loss by age



Image: Andras D. Hajdu

Categories of vision loss

0.3 million people
0.2M Female
0.1M Male

Blindness

2.0 million people
1.1M Female
1.0M Male

Moderate to severe

3.8 million people
2.1M Female
1.7M Male

Mild

4.7 million people
2.6M Female
2.1M Male

Near

The number of people with vision loss is growing

4.8 million

1990

2.6 million
 2.2 million

10.9 million

2020

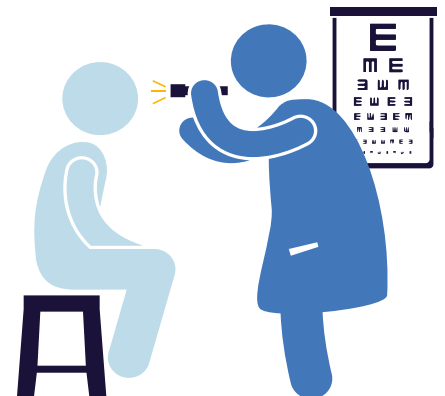
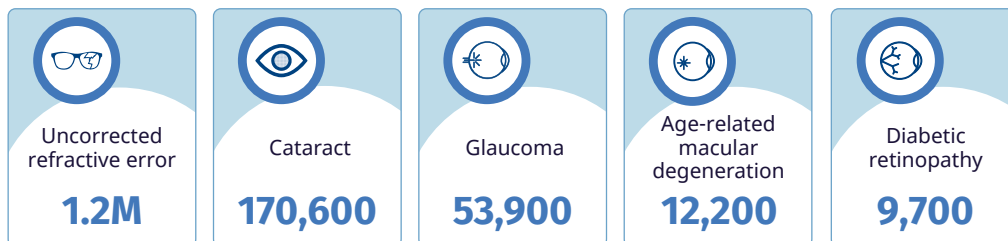
5.9 million
 4.9 million

28.3 million

2050

15.5 million
 12.8 million

Top five causes of blindness and moderate to severe vision loss



Eye care service indicators

Human resources

152 ophthalmologists
114 optometrists
486 allied ophthalmic personnel

National eye health

No. countries reporting:
Coordinators: **4**
Committees: **-**
Plans: **1**

Data

No. countries reporting:
Prevalence surveys: **2**
Service assessments: **-**

Cataract surgeries

- annually

For further information and definitions visit <https://www.iapb.org/learn/vision-atlas>. Data from VLEG/GBD 2020 model, via the IAPB Vision Atlas