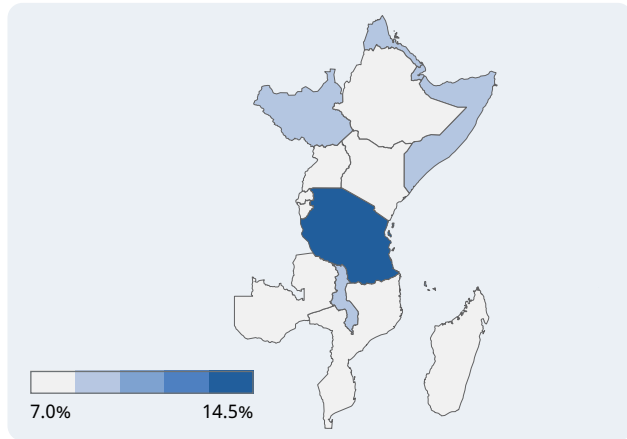


Prevalence of vision loss

Population: **428 million** Countries: **15**



Vision loss by age



Image: Tino Soriano; WSD photo competition

Categories of vision loss

2.0 million people
1.1M Female
0.9M Male

Blindness

7.0 million people
3.8M Female
3.2M Male

Moderate to severe

11.3 million people
6.2M Female
5.2M Male

Mild

17.3 million people
9.3M Female
7.9M Male

Near

The number of people with vision loss is growing

18.3 million

1990

9.7 million
8.6 million

37.6 million

2020

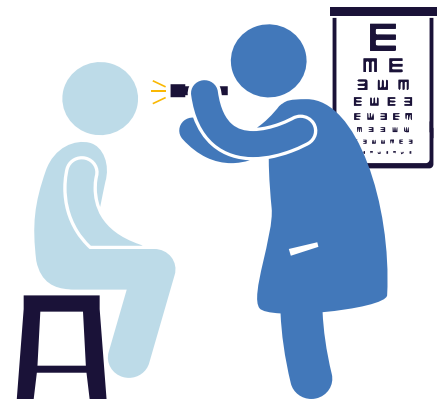
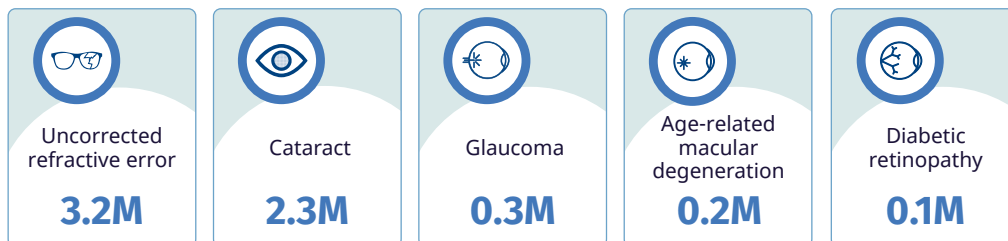
20.3 million
17.2 million

95.8 million

2050

53.5 million
42.3 million

Top five causes of blindness and moderate to severe vision loss



Eye care service indicators

Human resources

532 ophthalmologists
1,466 optometrists
2,992 allied ophthalmic personnel

National eye health

No. countries reporting:
Coordinators: **13**
Committees: **8**
Plans: **9**

Data

No. countries reporting:
Prevalence surveys: **12**
Service assessments: **4**

Cataract surgeries

189,605 annually

For further information and definitions visit <https://www.iapb.org/learn/vision-atlas>. Data from VLEG/GBD 2020 model, via the IAPB Vision Atlas