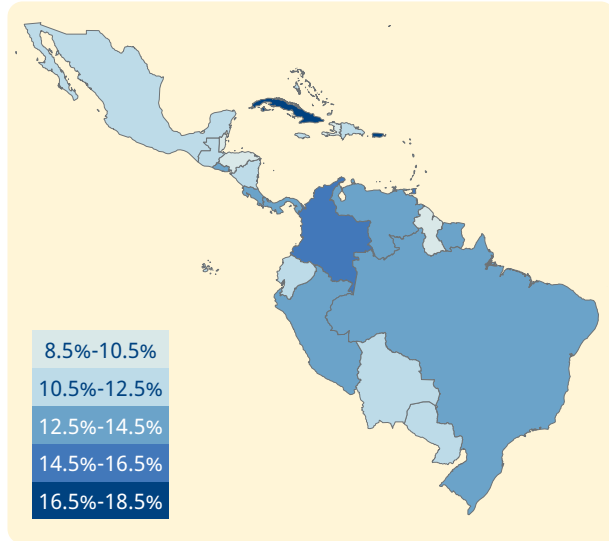


### Prevalence of vision loss

Population: 585 million



### Vision loss by age



Children and adolescents (0-19)

**7.3 million**

Image: Gioconda Armas



Adults (20-49)

**15.7 million**

Image: Trinidad and tobago WSD event committee



Older adults (50 and over)

**54.5 million**

Image: Jenna Montgomery

**55%** of people with vision loss are **women and girls**

### Categories of vision loss

**3.7M**

2M Female 1.7M Male

**Blindness**

**24.5M**

13.5M Female 10.9M Male

**Moderate to severe**

**21.5M**

11.8M Female 9.7M Male

**Mild**

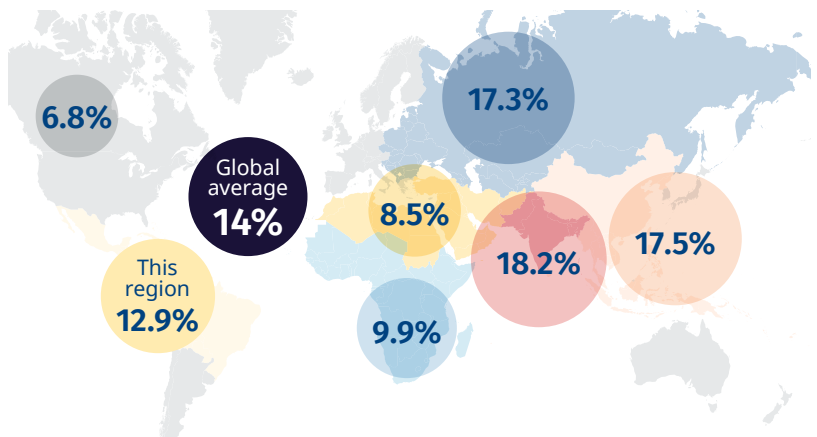
**27.9M**

15.3M Female 12.6M Male

**Near**

### Prevalence of vision loss

compared to other GBD Super Regions



### Top five causes of blindness and moderate to severe vision loss

	Uncorrected refractive error	<b>14.9M</b>
	Cataract	<b>5.8M</b>
	Glaucoma	<b>0.8M</b>
	Diabetic retinopathy	<b>0.7M</b>
	Age-related macular degeneration	<b>0.4M</b>

### The number of people with vision loss is growing

**36.5 million**      **77.5 million**      **140 million**

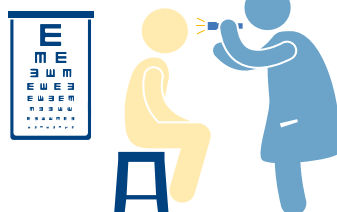
**1990**      **2020**      **2050**

**19.6 million**      **42.6 million**      **78.4 million**   
**16.9 million**      **34.9 million**      **61.9 million**

### Eye care service indicators

Countries: **33**

**Cataract surgeries**  
1,206,853 annually



#### National eye health

No. countries reporting:  
Coordinators: **22**  
Committees: **18**  
Plans: **9**

#### Human resources

**27,754** ophthalmologists  
**20,142** optometrists  
**8,259** allied ophthalmic personnel

#### Data

No. countries reporting:  
Prevalence surveys: **18**  
Service assessments: **4**

For further information and definitions visit <https://www.iapb.org/learn/vision-atlas>

Data from VLEG/GBD 2020 model, via the IAPB Vision Atlas