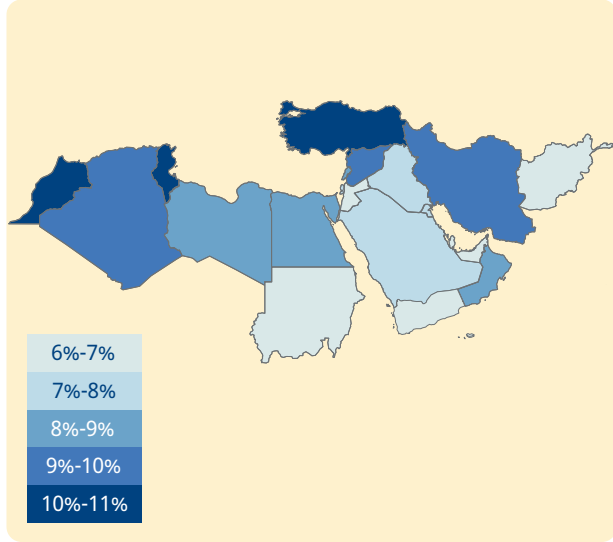


Prevalence of vision loss

Population: 621 million



Vision loss by age



Image: Asghar Khamseh



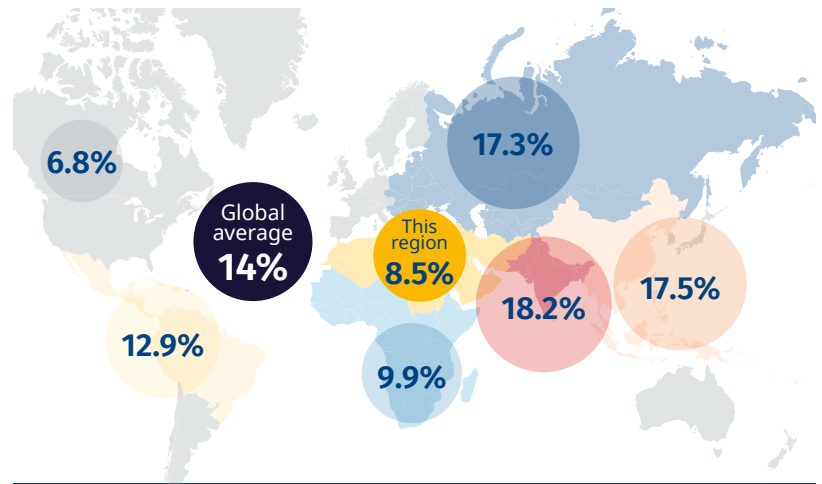
Image: Julia Gunther



Image: Jalal Bonyani

Prevalence of vision loss compared to other GBD Super Regions

compared to other GBD Super Regions



Categories of vision loss

3.1M

1.6M Female 1.5M Male

Blindness

21.8M

11.3M Female 10.6M Male

Moderate to severe

14.4M

7.4M Female 7.1M Male

Mild

14.5M

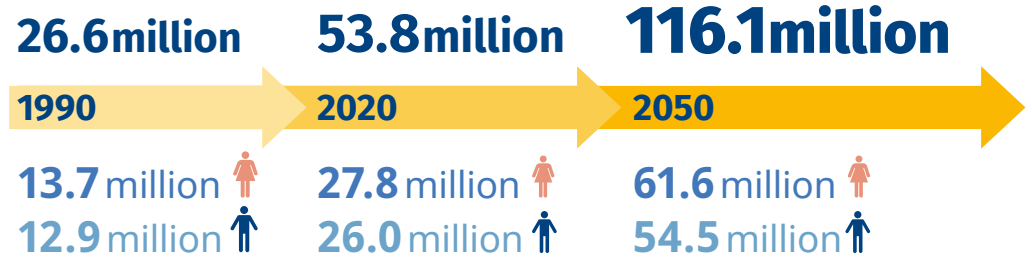
7.5M Female 6.9M Male

Near

Top five causes of blindness and moderate to severe vision loss

	Uncorrected refractive error	13.0M
	Cataract	6.2M
	Glaucoma	0.8M
	Age-related macular degeneration	0.7M
	Diabetic retinopathy	0.5M

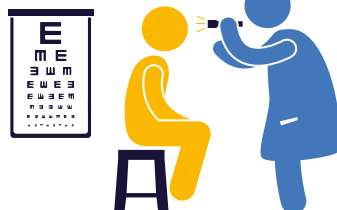
The number of people with vision loss is growing



Eye care service indicators

Countries: 21

Cataract surgeries
491,706 annually



National eye health

No. countries reporting:
Coordinators: 13
Committees: 7
Plans: 12

Human resources

21,236 ophthalmologists
9,527 optometrists
30,505 allied ophthalmic personnel

Data

No. countries reporting:
Prevalence surveys: 15
Service assessments: 6

For further information and definitions visit <https://www.iapb.org/learn/vision-atlas>

Data from VLEG/GBD 2020 model, via the IAPB Vision Atlas