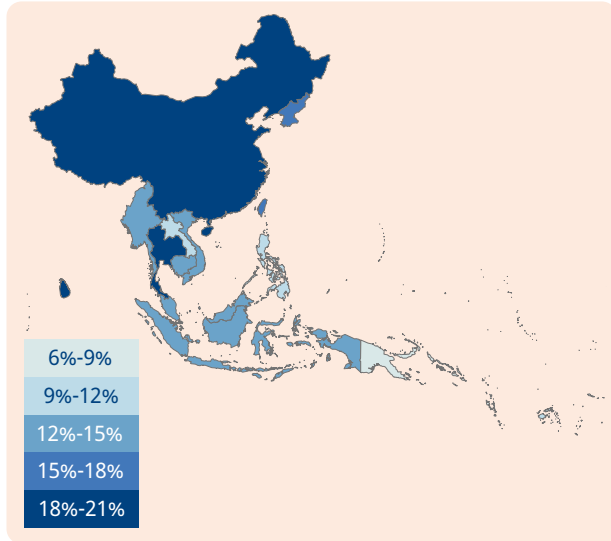


Prevalence of vision loss

Population: **2,186 million**



Vision loss by age



Image: Anh Le



Image: Aildrene Israel Tan

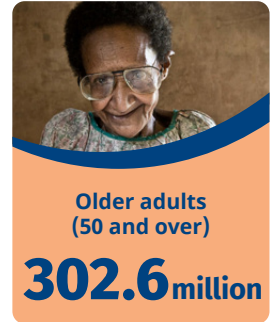
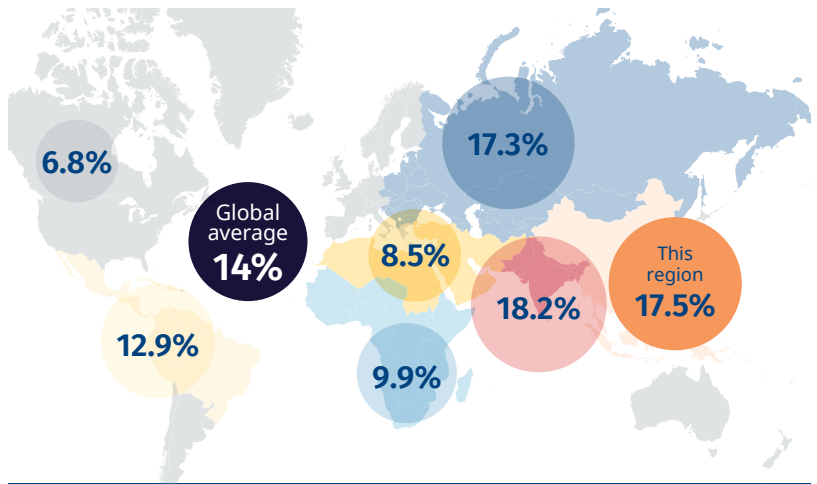


Image: Lea Emerson

Prevalence of vision loss compared to other GBD Super Regions

compared to other GBD Super Regions



Categories of vision loss

15.1M

8.6M Female 6.5M Male

Blindness

83.1M

46.8M Female 36.2M Male

Moderate to severe

91.0M

50.9M Female 40.2M Male

Mild

193.5M

106.8M Female 86.7M Male

Near

Top five causes of blindness and moderate to severe vision loss

	Uncorrected refractive error	41.1M
	Cataract	34.5M
	Age-related macular degeneration	3.3M
	Glaucoma	1.9M
	Diabetic retinopathy	1.5M

The number of people with vision loss is growing

186.0 million **382.6 million** **519.0 million**

1990

2020

2050

101.9 million

213.1 million

297.9 million

84.1 million

169.5 million

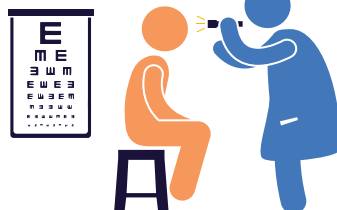
221.1 million

Eye care service indicators

Countries: **34**

Cataract surgeries

449,429 annually



National eye health

No. countries reporting:

Coordinators: **18**

Committees: **14**

Plans: **12**

Human resources

45,835 ophthalmologists

10,144 optometrists

60,295 allied ophthalmic personnel

Data

No. countries reporting:

Prevalence surveys: **20**

Service assessments: **13**

For further information and definitions visit <https://www.iapb.org/learn/vision-atlas>

Data from VLEG/GBD 2020 model, via the IAPB Vision Atlas