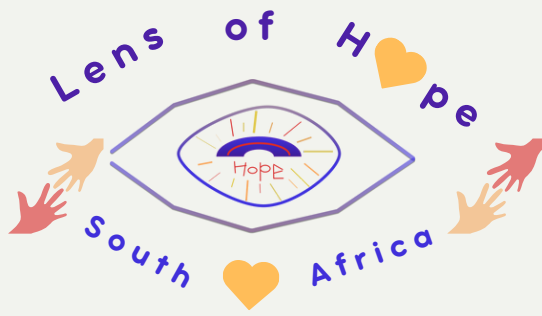




**Email** [lensofhopesa@gmail.com](mailto:lensofhopesa@gmail.com)  
[office@lensofhopesouthafrica.org](mailto:office@lensofhopesouthafrica.org)



# Introduction

Growing up in South Africa, I have been fortunate to have access to good healthcare, including regular eye tests and quality eyeglasses. However, during my journey, I became acutely aware of the high costs associated with eye care and the significant barriers these costs create for many people in our country. This realisation sparked my concern for those who are unable to afford even the most basic eye care services, which are essential for daily living, education, and employment.

The inspiration for this initiative came from a deeply personal experience. During a routine visit to my optometrist, I learned about the staggering number of individuals who go without necessary eye care simply because they cannot afford it. I started thinking about my own access to eyeglasses, made possible through my healthcare coverage, and wondered how different my life would be without this privilege. I began to consider how something as simple as a pair of glasses could profoundly impact someone's ability to learn, work, and engage with the world.

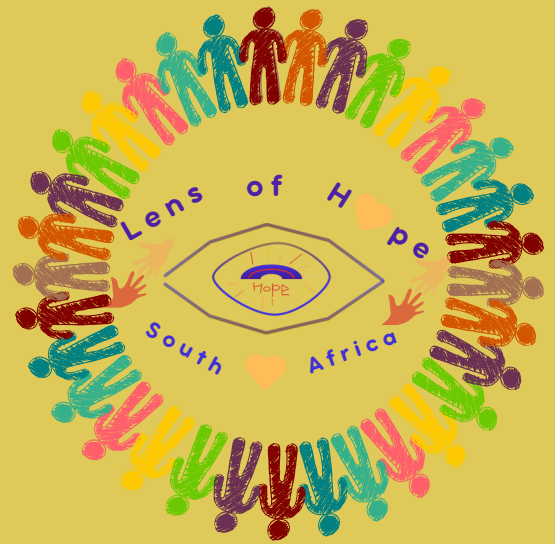
Moved by this insight, I decided to take action. I envisioned an organisation that could bridge the gap in eye care accessibility by collecting donated eyeglass frames and used glasses to refurbish, providing free or subsidised eye tests, and ensuring affordable lenses. By collaborating with optometrists, eye hospitals, and sponsors, this NGO aims to make eye care accessible to everyone, regardless of their financial situation.

Thus, I embarked on a mission to establish an NGO that would address this critical need. Our initiative is designed to harness the generosity of those who can donate their old glasses, the expertise of eye care professionals, and the support of sponsors committed to social good. Together, we can create a sustainable model that delivers eye care to those who need it most, transforming lives and communities across South Africa.

This initiative is not just about providing glasses; it's about giving people the clarity they need to pursue their dreams and live healthier, more fulfilling lives. With the support of donors, sponsors, and partners, we aim to make a lasting impact on the health and well-being of our fellow South Africans.

---

# Contents



---

03. PURPOSE

---

03. THE CHALLENGE

---

03. VISION AND MISSION

---

04. THE IMPACT

---

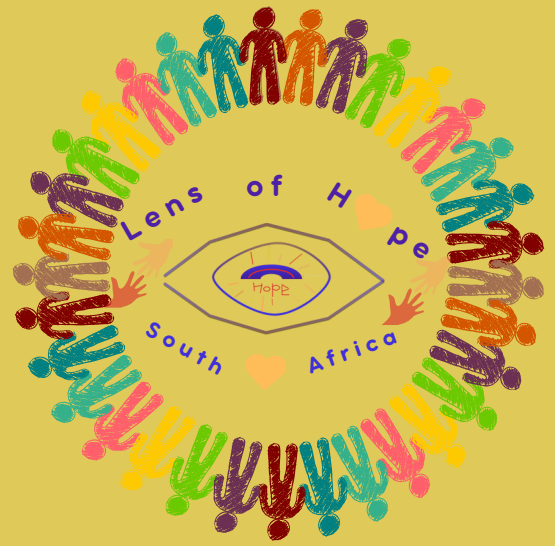
04. OUR SOLUTION

---

05. PROBLEM STATEMENT

---

# Contents



---

08. OBJECTIVES

---

11. BENEFITS FOR SPONSORS

---

13. WAYS TO SPONSOR

---

## Purpose

The purpose of this initiative is to address the significant barrier to eyecare faced by underserved communities in South Africa. By providing affordable access to eye tests, glasses, and other necessary services, the initiative aims to improve the overall quality of life and well-being of individuals who cannot afford these essential resources. Additionally, the initiative seeks to raise awareness about the importance of eyecare and advocate for greater accessibility to these services for all members of society. Ultimately, the purpose is to empower individuals by enhancing their vision and enabling them to participate more fully in their communities and daily activities.

## The Challenge

In South Africa, millions suffer from visual impairments, with those in low- and middle-income regions facing the greatest barriers. The high cost of eye care and the lack of accessible services leave many without the vision correction they desperately need. This has far-reaching impacts: children struggle in school, adults lose their jobs, and too many are left isolated and marginalised. Shockingly, 97% of visually impaired South Africans are unemployed, highlighting a critical intersection between vision loss and economic hardship.

### Vision



To create a South Africa where everyone has access to quality eyecare, allowing individuals to live healthier, more productive lives regardless of their financial situation.



### Mission

To bridge the gap in eye care accessibility by collecting and distributing donated eyeglass frames, providing free or subsidised eye tests, and offering affordable lenses through strategic partnerships with optometrists, eye hospitals, and sponsors.

## The Impact

When someone begins to lose their sight, they often lose more than just their vision. Their academics might suffer, deal with other underlying sicknesses such as headaches, lose their independence, and their connection to the world around them. Yet, with the right support, visually impaired individuals can thrive in any industry, contributing their unique talents and perspectives.

## Our Solution

Lens of Hope South Africa is dedicated to breaking down these barriers. We will collect and refurbish donated new and used glasses, partner with optometrists and eye hospitals to provide free or discounted eye tests and lenses, and go to low income communities to set up eye care and eye test camps. Our vision is clear: a South Africa where everyone has the opportunity to see, succeed, and thrive.

## Why Your Support Matters

Your support can change lives. By donating, sponsoring, or partnering with us, you become a vital part of this transformative journey. You help children see the blackboard clearly, adults return to work, and communities grow stronger and more inclusive.

**Together, we can make a difference. Together, we can bring hope into focus.**

### Vision



To create a South Africa where everyone has access to quality eyecare, allowing individuals to live healthier, more productive lives regardless of their financial situation.

### Mission



To bridge the gap in eye care accessibility by collecting and distributing donated eyeglass frames, providing free or subsidised eye tests, and offering affordable lenses through strategic partnerships with optometrists, eye hospitals, and sponsors.



# Problem Statement

## Scope

- **Visual Impairments:** Across South Africa, there exists a significant prevalence of visual impairments, with a notably higher incidence in low- and middle-income regions compared to high-income regions. This disparity highlights systemic inequalities in access to eye care services and resources.
- **Prevalence:** According to BlindSA, the prevalence of distance vision impairment in low- and middle-income regions is estimated to be four times higher than in high-income regions.
- **Impact on Daily Life:** Visual impairments not only affect individuals' ability to perform daily tasks but also hinder educational attainment, employment opportunities, and overall quality of life.
- **Economic Impact:** Alarmingly, an estimated 97% of visually impaired individuals in South Africa are unemployed, exacerbating socio-economic disparities and perpetuating cycles of poverty and dependency.
- **Employment Challenges:** Individuals experiencing vision loss often face barriers in maintaining employment due to the lack of necessary accommodations and support systems in the workplace. The onset of visual impairment may lead to job loss and subsequent isolation from social and professional networks.
- **Impact on Education:** Vision impairment significantly affects students' academic performance. Poor vision can hinder a child's ability to read, write, and participate in classroom activities, leading to decreased academic achievement and lower overall educational outcomes. Students with uncorrected vision problems often struggle to keep up with their peers, which can result in frustration, low self-esteem, and a higher risk of dropping out of school.
- **Impact on Health:** Unaddressed vision issues can lead to various health problems, including chronic headaches, eye strain, and fatigue. These symptoms not only cause discomfort but can also affect an individual's ability to concentrate and perform daily tasks effectively. In severe cases, untreated vision problems can lead to more serious eye conditions and irreversible vision loss.



# Problem Statement

## Causes

- **Financial Barriers:** The high cost of accessing comprehensive eye care services, including screenings, treatments, and assistive devices, contributes to limited prevention and intervention efforts, particularly in underserved communities.
- **Geographical Inequities:** Rural and remote communities often lack access to optometric facilities and specialists, exacerbating the disparity in eye care provision.
- **Lack of Awareness:** Many individuals are unaware of the importance of regular eye examinations or fail to recognise symptoms of underlying eye conditions, leading to delayed diagnosis and treatment.

## Impact

- **Educational Hindrances:** Children with uncorrected vision problems face difficulties in learning and academic performance, ultimately impacting their future prospects and socio-economic status.
- **Economic Burden:** Adults unable to afford corrective eyewear may experience limitations in job opportunities and productivity, perpetuating cycles of poverty and dependence.
- **Healthcare Strain:** The burden of untreated eye conditions places additional strain on the healthcare system, leading to increased costs and reduced efficiency in addressing preventable eye health issues.
- **Social Isolation:** Individuals experiencing vision loss may face social exclusion and isolation, leading to adverse mental health outcomes and reduced quality of life.



# Problem Statement

## Valuable Populations

- **Children and Youth:** Lack of access to paediatric eye care services affects children's developmental milestones and educational achievements, perpetuating intergenerational cycles of visual impairment.
- **Youth and Working Age Adults:** The transition from education to employment is particularly challenging for young adults with visual impairments, limiting their opportunities for career advancement and economic independence.
- **Elderly Individuals:** Ageing populations are at higher risk of age-related eye diseases such as cataracts and macular degeneration, yet many face barriers in accessing timely diagnosis and treatment.

## Underlying Systemic Challenges

- **Healthcare Infrastructure:** The overall inadequacy of healthcare infrastructure, particularly in townships and rural areas, contributes to limited access to comprehensive eye care services.
- **Socioeconomic Factors:** Persistent socio-economic inequalities, including income disparities, unemployment, and lack of social support, further marginalise vulnerable populations and impede their ability to access essential eye care services.

## Urgency for Action

- Addressing the root causes and systemic barriers to eye care accessibility is paramount to promoting equitable health outcomes and fostering social inclusion in South Africa.
  - By implementing targeted interventions and mobilising resources, we can mitigate the adverse effects of visual impairments, improve overall well-being, and empower individuals to lead healthier, more fulfilling lives.
  - Addressing the complex intersection of visual impairment and unemployment is essential for fostering inclusive economic growth, social cohesion, and human dignity in South Africa. By advocating for systemic solutions and empowering individuals with visual impairments, we can unlock their full potential and create a more equitable and inclusive society for all.
-

# Objectives

Millions of South Africans suffer from vision problems that impact their daily lives, education, and employment opportunities. Despite the critical importance of eyecare, many individuals lack the financial means to afford eye tests and glasses. Our NGO aims to address this pressing issue by mobilising resources, creating partnerships, and building a sustainable model to deliver eye care services to those in need.

Our key objectives are to establish a nationwide network for collecting donated eyeglasses and frames, partner with optometrists and eye hospitals to offer subsidised or free eye tests, provide affordable or free lenses through collaborations with sponsors and optical manufacturers, and conduct community outreach and awareness programs to educate the public about the importance of eye care and available services.



## Key Objectives

Collection of Donated Eyeglasses

---

Subsidised or free Eye Tests

---

Affordable or free Lenses

---

Community Outreach and Awareness



# Objectives

## **Collection of Donated Eyeglasses:**

- Establishing a network of collection points in schools, offices, community centres, and other accessible locations to gather donated eyeglasses.
- Partnering with organisations and conducting campaigns to encourage the donation of frames, leveraging social media and local media for wider reach.

## **Subsidised or Free Eye Tests:**

- Forming partnerships with optometrists and eye hospitals to provide free or heavily subsidised eye tests for individuals in underserved communities.
- Organising regular eye care camps in collaboration with these partners to bring services directly to those in need, especially in rural and remote areas.
- Working with sponsors so that beneficiaries can receive eye tests for free or at reduced costs depending on affordability.

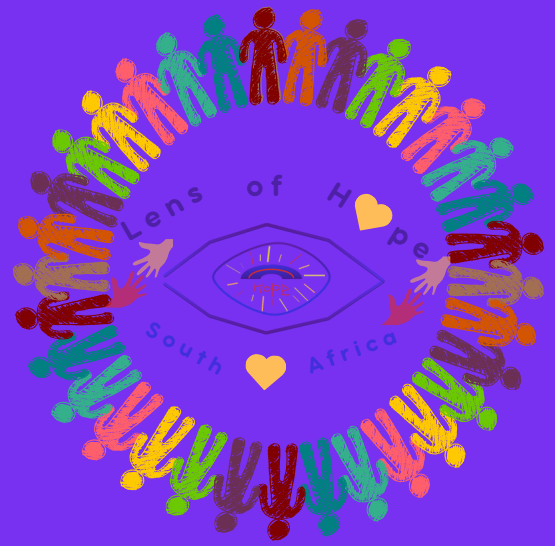
## **Affordable or Free Lenses:**

- Working with sponsors so that beneficiaries can receive lenses for free or at reduced rates depending on affordability.
- Implementing a voucher system where beneficiaries can receive lenses at participating optometry clinics and shops at reduced or no cost.

## **Community Outreach and Awareness:**

- Conducting awareness campaigns to educate communities about the importance of regular eye tests and available resources through the NGO.
- Engaging local leaders, schools, and community organisations to spread the word and identify individuals in need of eye care services.

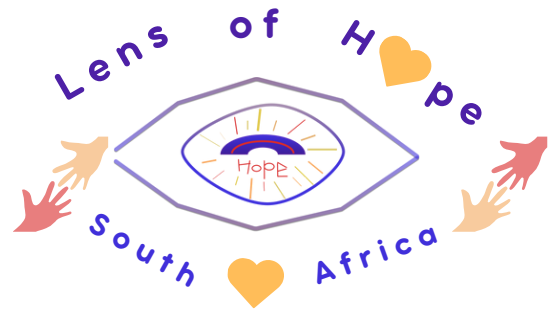
## Your support can make a significant impact



By contributing to our initiative, you enable us to provide comprehensive eye examinations, corrective lenses, and necessary medical treatments to those who otherwise cannot afford them. Clear vision is critical for daily activities, education, and employment, and your sponsorship will directly address these needs, empowering individuals to lead more productive and fulfilling lives. Additionally, by ensuring that children receive the eyecare they need, we can enhance their learning experiences and future opportunities, breaking the cycle of poverty and creating a healthier, more prosperous community. Your support is not just a donation; it is an investment in the future well-being and development of our society.



# Benefits for Sponsor



## Corporate Social Responsibility (CSR) and Public Relations

Supporting a humanitarian cause can significantly enhance a company's public image and reputation by showcasing their commitment to social responsibility. Sponsorship can attract positive media attention, resulting in increased visibility and favourable press coverage. Additionally, being associated with a local initiative demonstrates the sponsor's dedication to the community, fostering goodwill and stronger community ties.

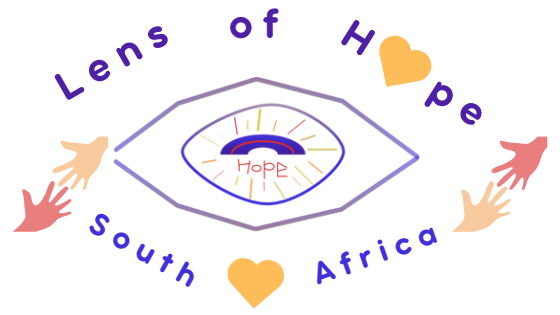
## Employee Engagement and Morale

Sponsors can encourage their employees to volunteer, which boosts employee morale and engagement, while involvement in community service projects serves as a team-building activity that fosters a sense of unity and purpose among employees.

## Tax Benefits

Donations to registered non-profits are often tax-deductible, providing financial benefits to sponsors.

# Benefits for Sponsor



## Direct Impact and Social Good

Sponsors can see the direct impact of their contributions through reports and updates on the number of people helped and services provided. By improving access to eye care, sponsors contribute to the long-term health and well-being of the community, leading to broader social benefits such as improved education and productivity.

## Networking and Partnerships

By supporting your initiative, sponsors can form strategic alliances with other businesses and organisations involved in the initiative, leading to potential business opportunities and collaborations, while also gaining access to new customer segments and communities.

## Corporate Culture and Values

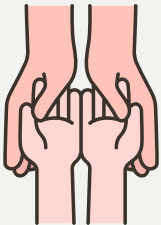
Sponsoring an initiative that aligns with their corporate values and mission can strengthen their brand identity and corporate culture.

# Ways to Sponsor

**There are different ways to sponsor our eye care initiative, depending on resources, goals, and level of involvement.**



monetary support to cover operational expenses, such as administrative costs, equipment purchase, and eye care services. Financial sponsors may contribute a one-time donation or commit to ongoing support through regular contributions.



in-kind support by providing goods or services that are essential for the initiative. This could include but not limited to donating eyeglass frames, lenses, equipment, or offering services such as printing, transportation, petrol, marketing support, pro bono eye care by optometrists etc



sponsor specific events or activities such as eye care camps, community outreach programs, or fundraising events. Event sponsors may provide financial support, in-kind donations, or logistical assistance to ensure the success of the event.



sponsor specific programs or initiatives. For example, sponsor a vision screening program for school children, a mobile eye care clinic for rural communities, or a subsidised eyeglasses program for low-income individuals.

# Ways to Sponsor

**There are different ways to sponsor our eye care initiative, depending on resources, goals, and level of involvement.**



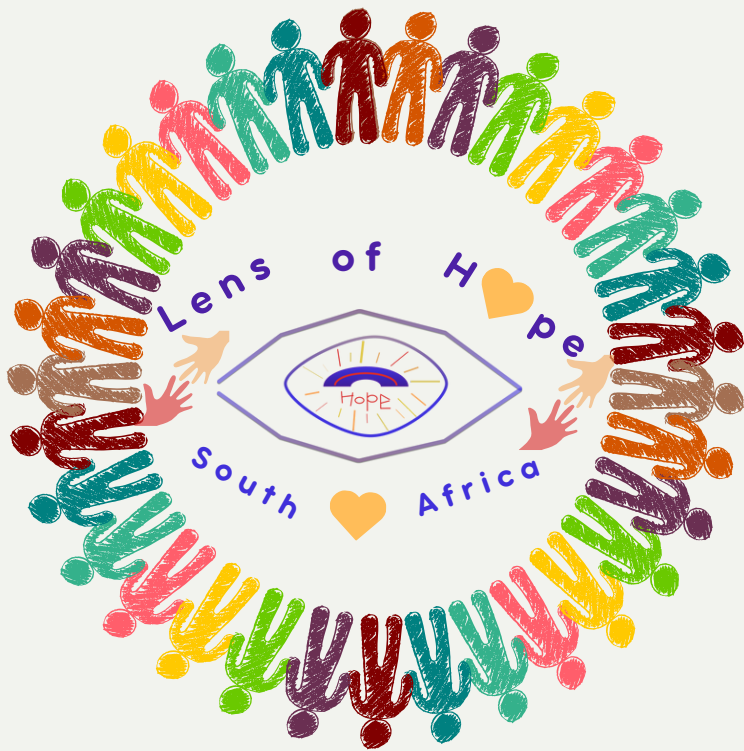
**align your marketing efforts with our initiative by promoting support through cause-related marketing campaigns. This could involve featuring Lens of Hope in your advertising, packaging, or promotional materials, thereby raising awareness and generating support from customers.**



**encourage employee participation in our initiative by offering employee volunteer programs, matching donations, or organising employee fundraising events. Engaging employees in charitable activities can foster a sense of pride and purpose within your organisation.**



**long-term partnerships with Lens of Hope, committing to sustained support over an extended period. Long-term partners can play a crucial role in ensuring the stability and sustainability of Lens of Hope.**



**Thank you!**  
**We look**  
**forward to**  
**changing**  
**lives with**  
**you**

**Contact**

**Email** [lensofhopesa@gmail.com](mailto:lensofhopesa@gmail.com)