



WORLD **DIABETES** FOUNDATION

**COMBATING DIABETES WITH THE PATIENT IN FOCUS**

ANDERS DEJGAARD MD, DM Sci  
MANAGING DIRECTOR



WORLD **DIABETES** FOUNDATION

# GLOBAL DIABETES BURDEN



DM: 2013 - 382 mio

2035 - 592 mio

IGT: 2013 - 316 mio

2035 - 471 mio

80%

People with diabetes live in the Middle and Low Income Countries

88%

Deaths attributable to diabetes occur in the same regions



WORLD **DIABETES** FOUNDATION

# **ABOUT** **THE WORLD DIABETES FOUNDATION**



- Founded in **2002**
- Initiated by a grant from Novo Nordisk A/S of **DKK 1.1 billion. / USD 189 million**
- New grant in 2013 of USD 105 million
- Registered in Denmark as an independent trust.
- **351** projects **108** countries



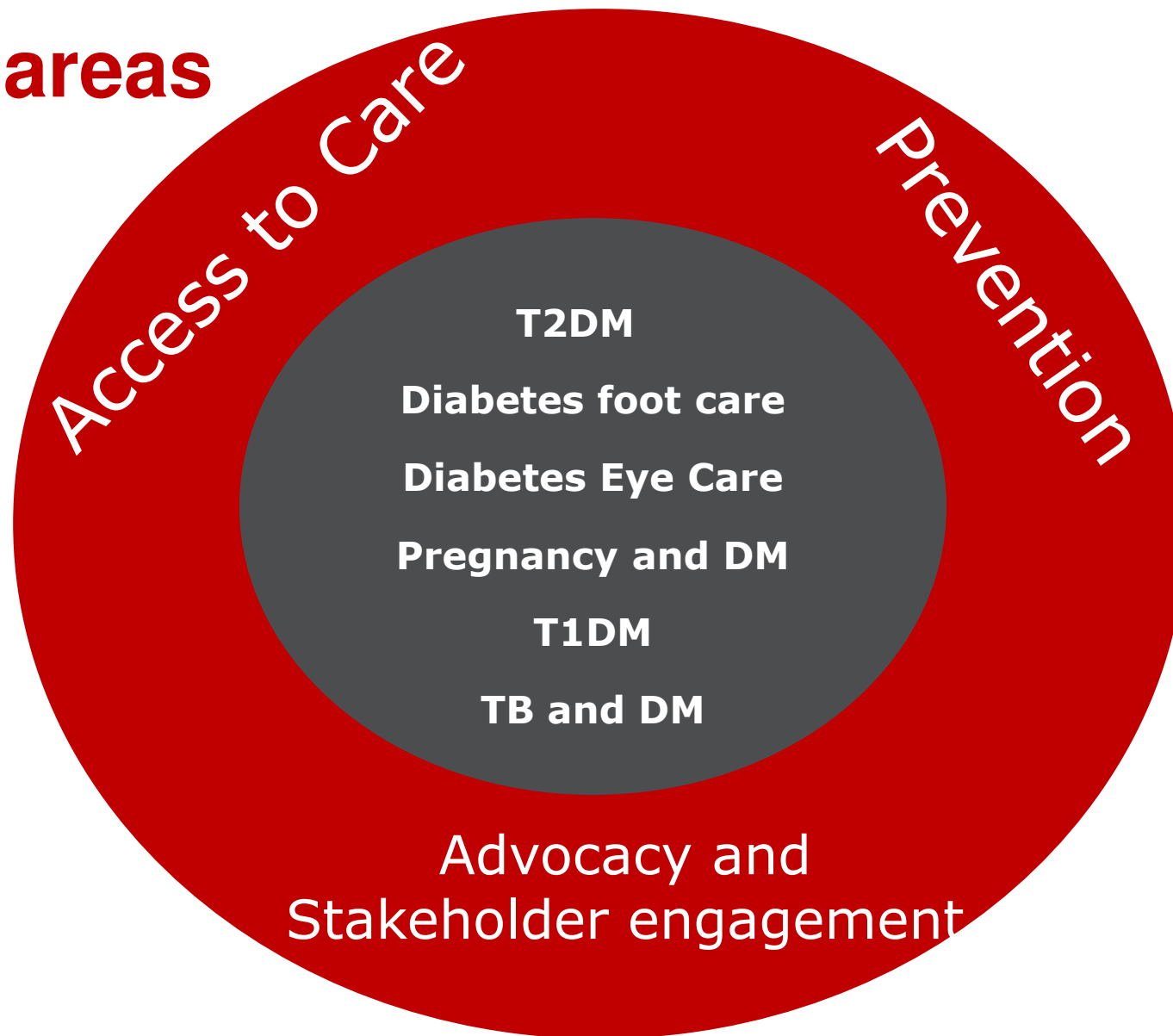
# VISION

To further the prevention and treatment of diabetes and its complications in developing countries

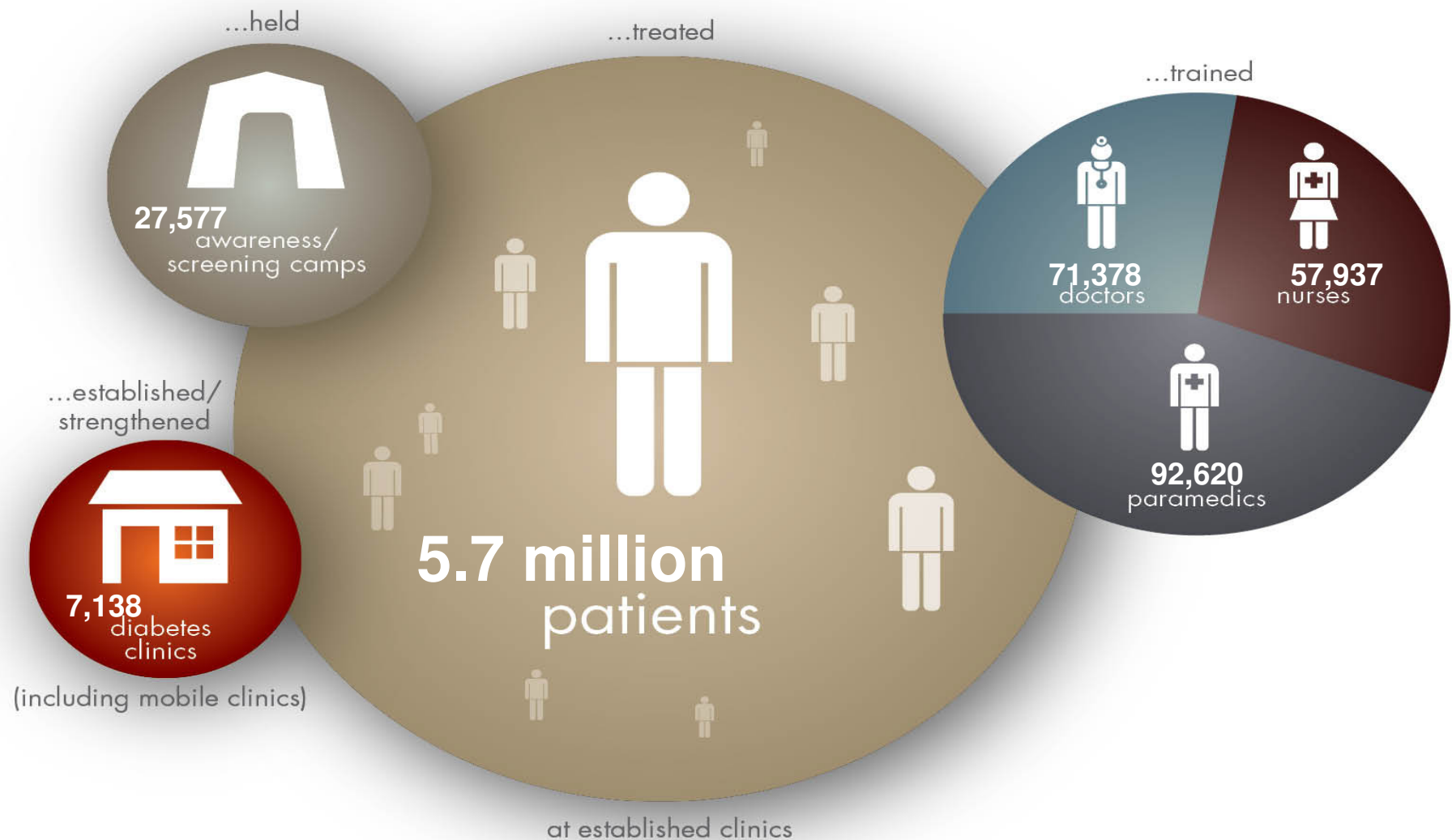


WORLD **DIABETES** FOUNDATION

## Focus areas



## SINCE 2002 WDF HAS SUPPORTED ACTIVITIES WHICH HAVE...



# DIABETES AND EYE CARE FACTS



**1.7million**  
People screened for  
diabetic retinopathy



**230.000** Cases of dia-  
betic retinopathy detected  
(13% of those screened)



**107.000**  
Patients received  
sight-saving treatment

## WDF FUNDING FOR DIABETES AND EYE CARE OUT OF TOTAL FUNDING

Diabetes and eye care  
**13%**  
USD 11,770,754



Other focus areas  
**87%**  
USD 78,184,083



# 6300 SCREENING CAMPS





# EYE CARE PROJECT COMPONENTS

- Screening programmes
- Establishment of eye clinics and mobile vans
- Awareness raising
- Guideline development
- Training of HCPs / ophthalmologists



WORLD **DIABETES** FOUNDATION

# EYE CARE CHALLENGES

- High establishment costs to procure equipment
- Maintenance of highly advanced equipment
- Specialist required to operate equipment
- Big patient load required to ensure cost efficiency
- To justify high technological eye care, if no basic DM care is available



# LESSONS LEARNED

- Integration of primary DM care in DR projects
- Ensure link between screening unit, treatment (ophthalmological dept.) and follow-up (DM clinic)
- Ensure availability of HCP to operate advanced equipment
- Repetitive training necessary
- Financial and technical strategy for maintenance and repair of equipment (power regulators)
- Specification of beneficiaries
- Importance of sensitisation/awareness raising of GPs





# IF YOU HAVE BEEN



## - Thank you for listening!



WORLD **DIABETES** FOUNDATION