

**90%**  
of all vision loss  
is preventable or  
treatable

World population: **7,781 million**

### Categories of vision loss

Total **1,106M** people | **609M** Female | **497M** Male

**43M**

24M Female | 19M Male

Blindness

**295M**

163M Female | 132M Male

Moderate to severe

**258M**

142M Female | 116M Male

Mild

**510M**

280M Female | 229M Male

Near

### Vision loss by age



Image: Thong Nguyen

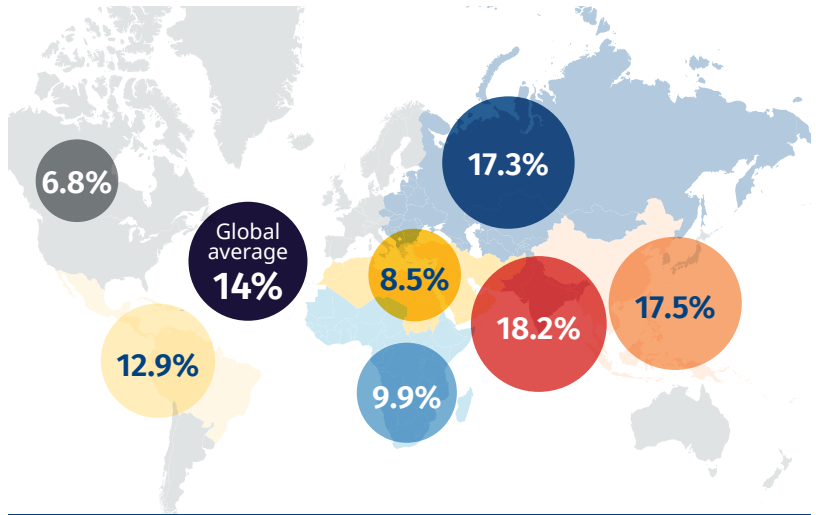


Image: Zon Hisham Bin Zainal Abidin

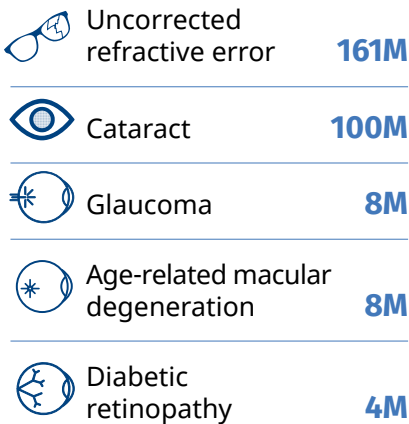


Image: Lia Marmelstein

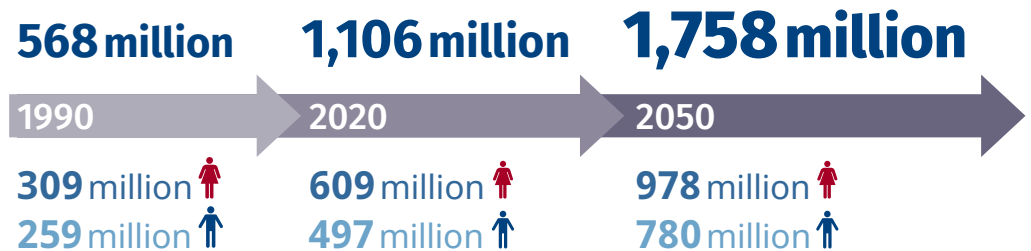
### Prevalence of vision loss



### Top five causes of blindness and moderate to severe vision loss



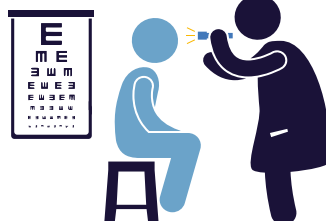
### The number of people with vision loss is growing



### Eye care service indicators

Countries: **204**

**Cataract surgeries**  
**9,927,905** annually



#### National eye health

No. countries reporting:

Coordinators: **102**

Committees: **69**

Plans: **67**

#### Human resources

**238,653** ophthalmologists

**340,257** optometrists

**218,779** allied ophthalmic personnel

#### Data

No. countries reporting:

Prevalence surveys: **117**

Service assessments: **40**

For further information and definitions visit <https://www.iapb.org/learn/vision-atlas>

Data from VLEG/GBD 2020 model, via the IAPB Vision Atlas